

LED DOWN LIGHT

Product Manual

To dear users

※ Thank you for choosing this quality LED Down Light.

※ To ensure correct function and safety, please read and follow all instructions carefully before assembly, installation and use of this luminaire. Please refer to these instructions for future reference.

Attention:

Ensure that power is off on the main panel before starting installation.

※ Always ensure the power is OFF and the luminaire has cooled down before performing any maintenance, cleaning or making any adjustment to the luminaire.

※ Remove all packaging material from the product and be careful not to throw away accessories that may be hidden within the packaging material.

※ Check whether the luminaire has been damaged during transport. Do not operate/install any product which appears damaged in any way. Return the complete product to the place of purchase for inspection, repair or replacement.

※ This LED Down Light is not suitable for covering with thermal insulating materials. More details, please refer to below Clearance Information.

※ Failure to comply with the instructions in this manual may increase the risk of damage or injury and will void warranty. Installation or maintenance should be operated by qualified electricians.

※ Use static free gloves when installation and maintenance of cleaning the luminaire to avoid markings.

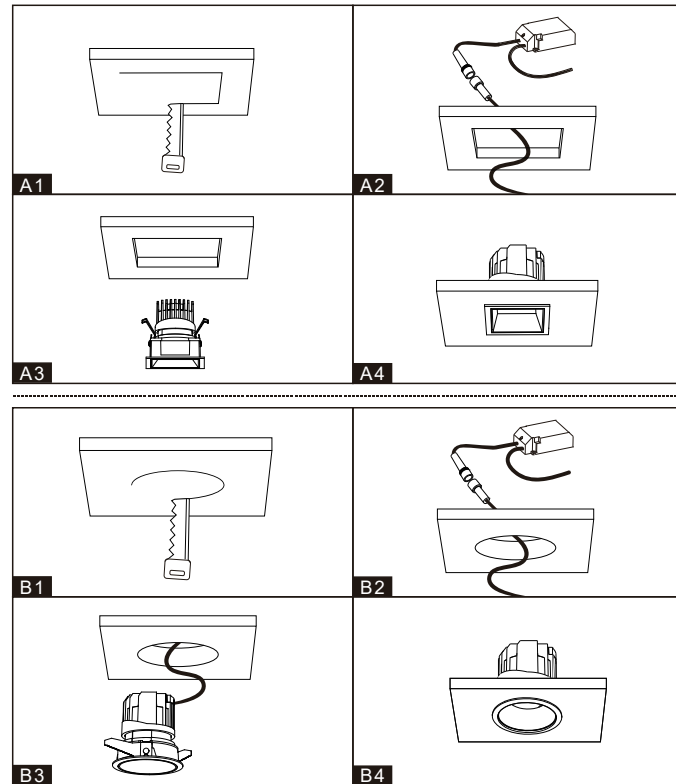
※ Wiring: For luminaires with 0-10V dimming, or digital dimming, wires in different colors leads to appropriate control wires.

Cut-out Size Sheet

Model	Cut hole size (tolerance)	Ceiling thickness	Cut-out
SD042055R	0-1mm	8~15mm	Φ55mm
SD041068R	0-1mm	8~15mm	Φ68mm
SD042068R	0-1mm	8~15mm	Φ68mm
SD041075R	0-2mm	8~15mm	Φ75mm
SD042075R	0-2mm	8~15mm	Φ75mm
SD041075S	0-2mm	8~20mm	Φ68mm
SD042075S	0-2mm	8~20mm	Φ68mm
SD041068RL	0-7mm	8~20mm	75x75mm
SD042068RL	0-7mm	8~20mm	75x75mm
SD041075SL	0-7mm	8~20mm	75x75mm
SD042075SL	0-7mm	8~20mm	75x75mm
SD042095R	0-7mm	8~20mm	Φ95mm

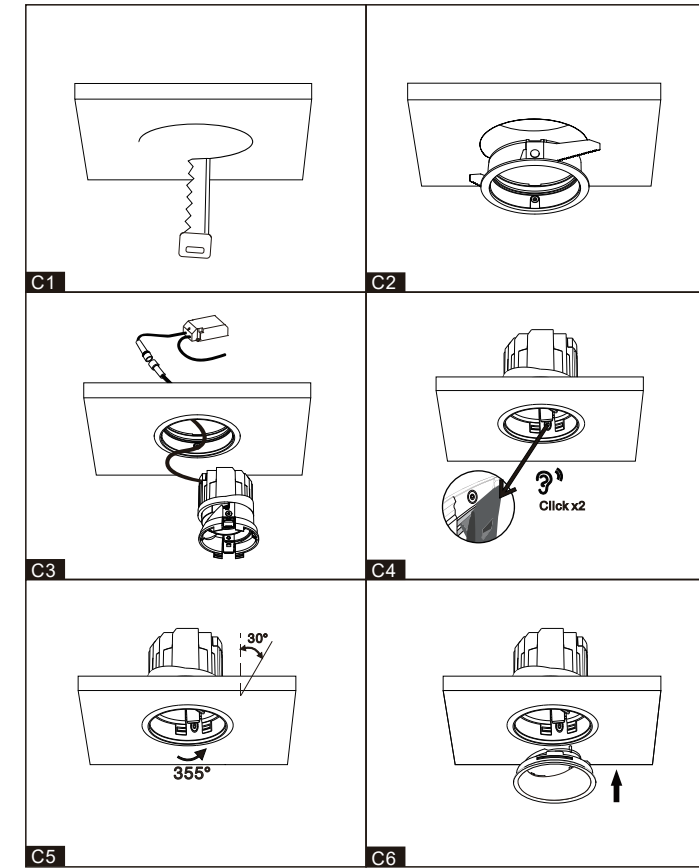
Installation Instruction

Trim Version - Overall Installation



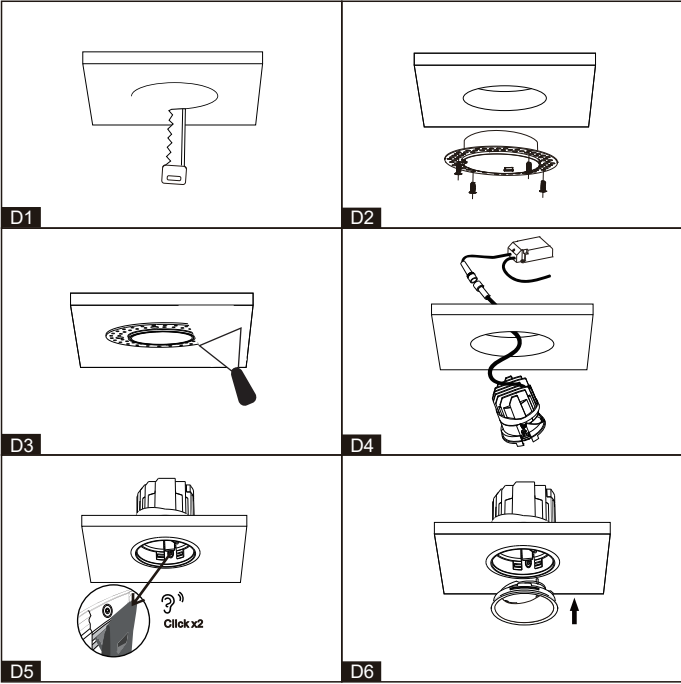
- Step 1:**
Cut ceiling hole in proper size in the ceiling as per required cut-out size and shape. Hole size refer to above sheet. Ensure that there is nothing in the ceiling to obstruct the installation.
- Step 2:**
Connect power supply to power lead and pass the power supply through the ceiling opening. (Fig. A2 & B2).
- Step 3:**
Connect light engine to power supply, compress retainer clips/spring, and insert light engine in ceiling cut hole (Fig. A3 & B3).

Trim Version - Split Installation



- Step 1:**
Cut ceiling hole in proper size in the ceiling as per required cut-out size and shape. Hole size refer to above sheet. Ensure that there is nothing in the ceiling to obstruct the installation. (Fig. C1).
- Step 2:**
Take out the bezel frame from luminaire, compress retainer clips/spring and install the frame into the cut hole. (Fig. C2).
- Step 3:**
Connect power supply to power lead and pass the power supply through the ceiling opening. (Fig. C3).
- Step 4:**
Put and lock the optical accessories in the frame body, if necessary or available. Combine the LED Engine with frame body by screwing in. Insert and push up the LED Module and frame body into the trim frame and secure it until it locks into position and hear the "Click" sound. (Fig. C4).
- Step 5:**
Adjust (tiltable type) and rotate into required direction by tilting holder, if necessary. (Fig. C5).
- Step 6:**
Install the secondary reflector/baffle in luminaire. (Fig. C6).

Trimless Version - Split Installation



Step 1:
Cut ceiling hole in proper size in the ceiling as per required cut-out size and shape. Hole size refer to above sheet. Ensure that there is nothing in the ceiling to obstruct the installation. (Fig. D1).

Step 2:
Take out the trimless frame from the luminaire and insert it in ceiling cut hole. For maximum adhesion a bead of plaster/compound can be applied to ceiling before placing the trimless frame into position. Fasten to ceiling with screws. (Fig. D2).

Step 3:
Starting outside edge, apply plaster/compound to trimless frame. Continue to apply until lip of trimless frame is covered. Allow plaster/compound to dry. Sand back the plaster until the surface is smooth. Repaint the ceiling as required. (Fig. D3).

Step 4:
Put and lock the optical accessories in the frame body, if necessary or available. Combine the LED Engine with frame body by screwing in. Connect power supply to power lead and pass the power supply through the ceiling cut hole.

Step 5:
Insert and push up the LED Module and frame body into the trim frame, secure it until it locks into position and hear the "Click" sound. (Fig. D5).

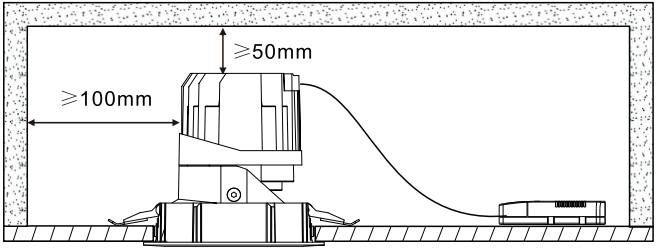
Step 6:
Adjust (tiltable type) and rotate into required direction by tilting holder. Install the secondary reflector/baffle in luminaire. (Fig. D6).

Clearance Information

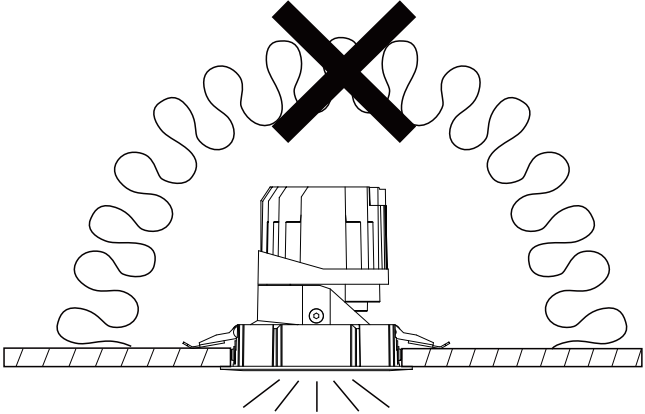
✘ The LED recessed downlight should have at least a 50mm air gap from any insulation, barriered loose combustable materials or any structural materials. This will help as well to properly dissipate the heat produced by the LED recessed downlight.

✘ Please note that a suitable barrier is required for loose fill insulation or loose combustable materials.

Location and Description	Clearance
Top clearance to combustable building element	50mm
Side clearance to combustable building element	100mm
Side clearance to bulk thermal insulation	50mm
clearance to auxiliary equipment(LED drivers)	50mm



⚠ Luminaire not suitable for covering with thermally insulating material.



Tips and Tricks.

✘ Push/Press the adjustable part to tilt the fixture to the request direction. There has inside index mark to refer the tilting angle. (Fig. E)

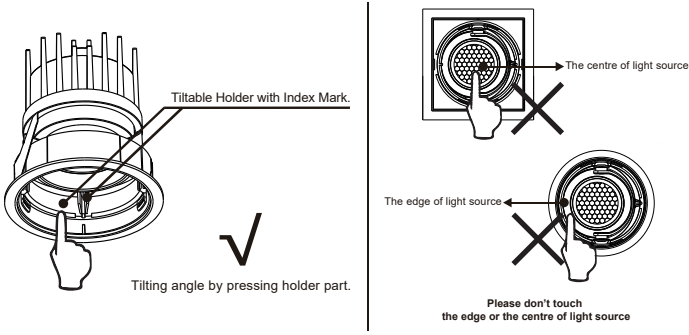


Figure E: 0-30 Degree Tilting

✘ Dial toward inside to loose the locking point, one side first then another one, do NOT dial both sides at the same time. (Fig. F)

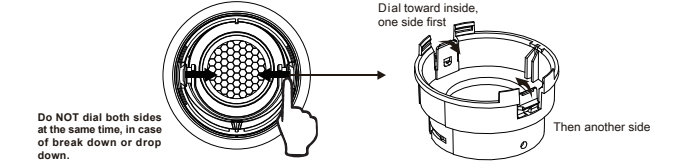


Figure F.

✘ If found lighting filters in the package, please fix it by screwing in the middle holder part. (Fig. G)

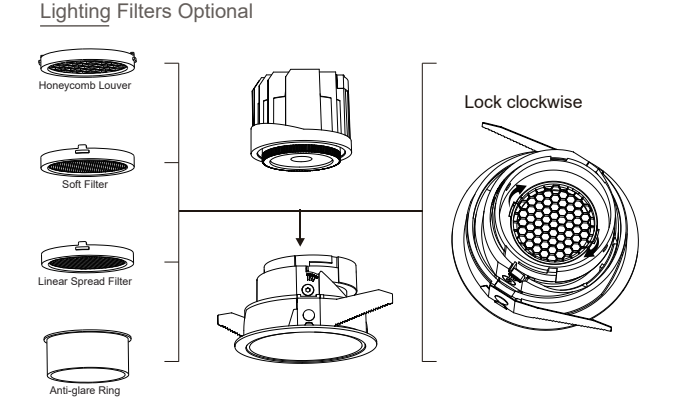


Figure G: Filters Installation - Tools Free